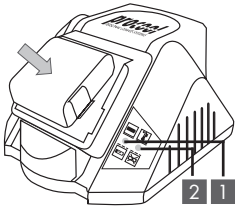
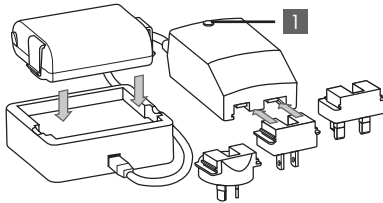


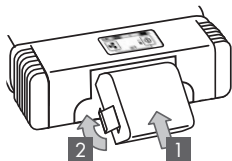
QUICK USER GUIDE FOR PERSONAL COOLER FOR CSA



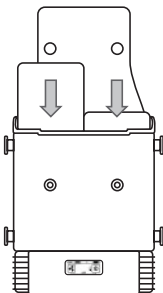
The green LED-display (1) flashes during charging. When charging is complete the LED-display is permanently illuminated green. Illumination or flashing of the red LED-display (2) indicates a fault. The battery is not charging.



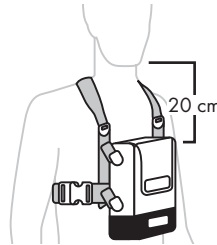
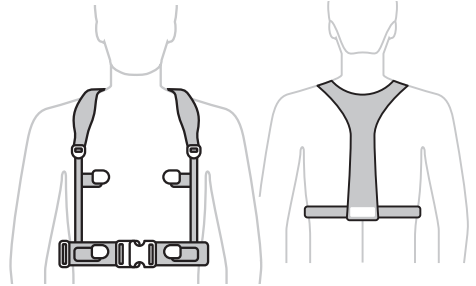
The charger's LED-display (1) is permanently orange when ready for use. The LED-display flashes green during charging. When charging is complete the display is permanently green.



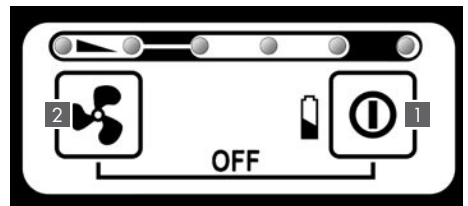
Place the battery into the unit as shown in the diagram (insert battery into compartment 1 and snap into place 2).



Open the diffuser rubber on the front of the unit insert both cooling packs up on edge side by side into the unit and close the diffuser.



Put on the self-contained carrier system as shown in the diagrams. Adjust the strap length using the adjustment mechanisms. The Personal Cooler is then attached by hooking it into the quick-release fasteners.



To activate, quickly press the ON button 1 once. Press button 2 to switch between settings HIGH and LOW. Repeated pressing of button 1 shows the battery charge status. To turn off the unit, press buttons 1 and 2 simultaneously until all displays are extinguished.

ATTENTION

Hypothermia protection - when the temperature inside the suit falls below 10 °C, cooling stops automatically and the Standby mode is activated.

**IMPORTANT SAFETY INSTRUCTIONS****GENERAL SAFETY INSTRUCTIONS**

- Device is EMC-tested; CE compliance verified.
- Unauthorized modification and/or changing of the product is not permitted.

**ELECTRICAL SAFETY: CHARGERS**

- Line voltage must correspond to the voltage given on the charger nameplate.
- Never insert or remove the charger plug with wet hands.
- Protect charger from moisture – use only indoors.
- Check charger and cable for defects before use.
- Charge the original lithium-ion batteries only with the provided charger

**SAFETY INSTRUCTIONS FOR BATTERY**

- The battery must not be exposed to temperatures above 45 °C during charging or above 60 °C during use – risk of explosion!
- Do not heat, burn, break, or damage batteries or throw them into fire or household waste – risk of explosion!

**IMPORTANT HANDLING INSTRUCTIONS**

- The Personal Cooler is to be carried on the body in sealed protective clothing.
- To freeze cooling packs, place in a \*\*\* (3-star) freezer or an icebox (accessory).
- Insert cooling packs immediately before turning on the device – otherwise, valuable cooling energy is lost.
- Transport of cooling packs is possible in portable freezers or insulation boxes (accessory).
- After each use remove battery first before cleaning and disinfecting the unit.
- Follow your country's existing regulations regarding the disposal of the Personal Cooler, charger, batteries and packaging materials.

**IMPORTANT TECHNICAL NOTES**

Operating temperature: up to 60 °C max.

Temperature for transport and storage: Storage/transport without battery: -40 °C to 85 °C

Storage/transport with battery included: -20 °C to 45 °C, up to 1 month  
-20 °C to 40 °C, up to 6 months  
-20 °C to 35 °C, up to 1 year

**MANUFACTURER ADDRESS**

ENTRAK GmbH & Co. KG  
Richtweg 33  
90530 Wendelstein  
Germany  
Tel: +49 (0) 9129.40 35-0  
Fax: +49 (0) 9129.40 35-55  
info@procool.de  
www.procool.de